

TO ADD VALUE TO LIFE

# NILE FACILITY MANAGEMENT

**SUSTAIN** more than **MAINTAIN**



**Nile Facility Management**

النيل لخدمات الصيانة والتشغيل

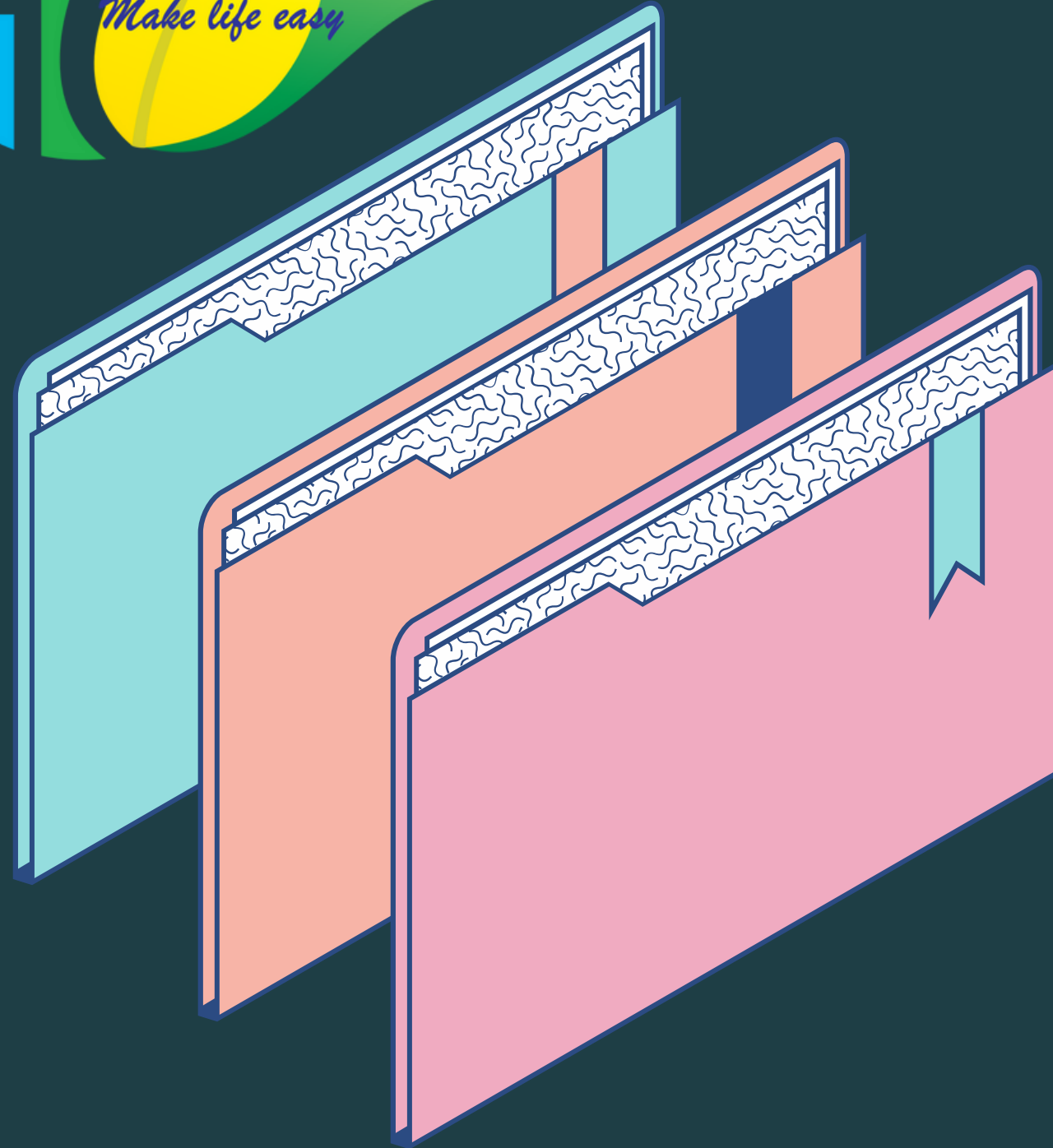
مفوم شامل للأدامة

**CAIRO-BAGHDAD**

07840007310

07840007309

[nilefm@nileps.com](mailto:nilefm@nileps.com)



# CONTENT

02	Content	16	call out services
03	Introduction	17	Comprehensive Maintenance Package
04	Our company	18	Standard Maintenance Package
06	<b><i>Our service</i></b>	19	<b><i>Our service</i></b>
07	<b><i>Building service</i></b>	22	software
09	Electrical Maintenance	23	Web & Mobile App
11	Electrical Maintenance	25	Facility management software by CloudApper®
13	soft facility Service	26	CloudApper Facilities
14	<b><i>Maintenance Reporting Service</i></b>	31	<b><i>contact</i></b>
15	Helpdesk		

# Introduction

Two decades ago it was considered cost-efficient to directly employ maintenance staff; none of us could imagine any better way of maintaining a building or premises. When the term outsourcing emerged it revolutionized our world and gave us a completely a new approach to maintenance services.

**NILE FM** Maintenance offers a 'one-stop shop' for integrated maintenance services. Through a single point of contact our clients receive a simplified, cost-saving, risk-reducing, efficient service that is rarely achieved through direct employment. We look forward to counting you amongst our satisfied clients.





# OUR COMPANY



Nile Facility Management

النيل لخدمات الصيانة والتشغيل

NILE FM Maintenance Services Ltd is a company built from a vast array of experience. We can provide full service and maintenance programs tailored to your requirements, which can range from “care” maintenance of an empty building through to a resident engineer on a large office or a commercial complex.

We are able to maintain all building services equipment utilizing either our directly employed labor force, or specialist subcontractors who meet our requirements, both in terms of Quality Assurance and Health and Safety.





# OUR COMPANY

NILE FM is providing a quality service at competitive prices, together with the recognition of client's requirements and provision of cost effective solutions and high level service delivery. It is able to offer the personal service which, even in these modern times, is still highly valued by many customers.

With the necessary procedures in place this will confirm that we are capable of providing bespoke services to the highest level and to the complete satisfaction of our clients.



# OUR SERVICE



**General  
Building  
Maintenance**

**Electrical  
Maintenance**

**Mechanical  
MAINTENANCE**

**soft facilities  
services  
cleaning  
safety  
housekeeping**

**Call-Out Service**

# Building Services



At the commencement of every new contract, we carry out an in-depth maintenance survey of the equipment and plant within your premises. This knowledge informs our maintenance solution for your business. All of our services can be provided under a Planned Preventative Maintenance programme, specifically designed to ensure continuity of service of your critical systems, or under a response maintenance package operated through our helpdesk to a service level agreement.

Risk assessments of the building or specific areas within the building can be carried out, if required, at this stage in order to comply with relevant regulations and standards.

# Building Services

- **Air condition AC ,HVAC**
- **Energy Management**
- **Building & Fabric Maintenance**
- **Planned Preventative**
- **Maintenance programmers**
- **Response Maintenance / Helpdesk**
- **Consultancy services**







# Electrical Maintenance

Power supply

Lighting systems

Generators & UPS  
systems

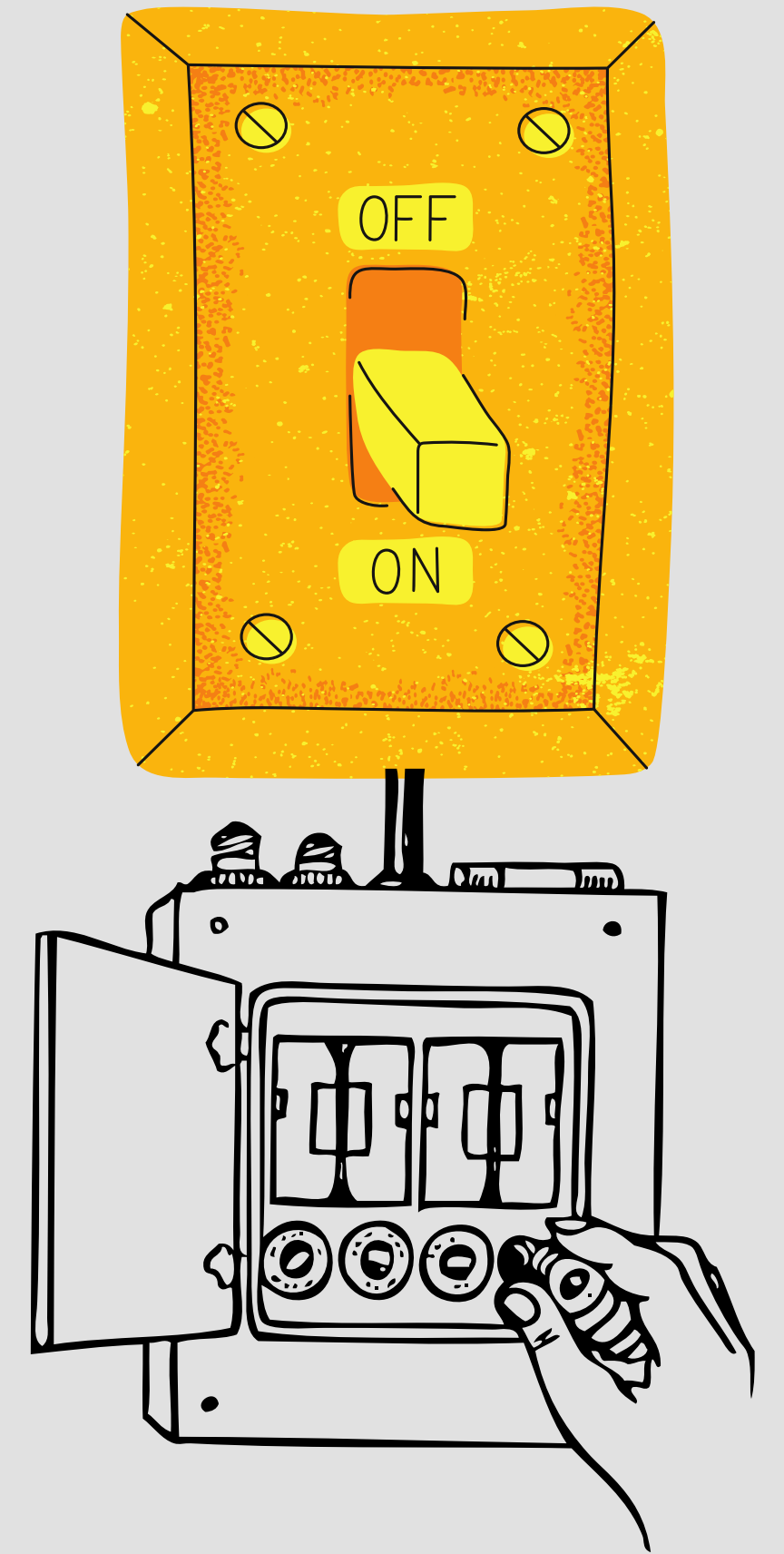
Portable Appliance  
Testing

Access control  
systems , CCTV

Fire & Security Alarms

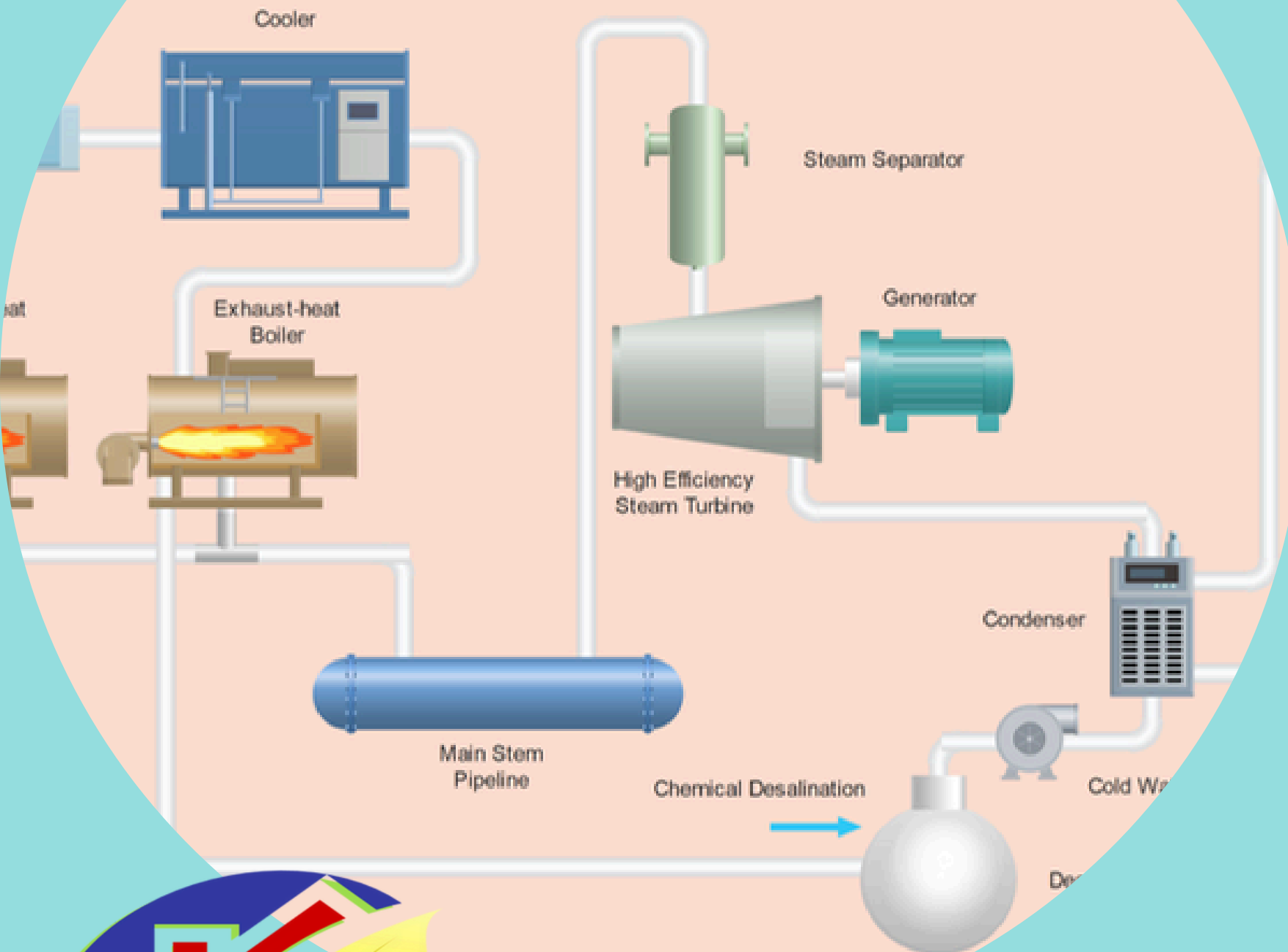
Thermal Imaging

**New!**



# Mechanical Maintenance

Process Flow Diagram

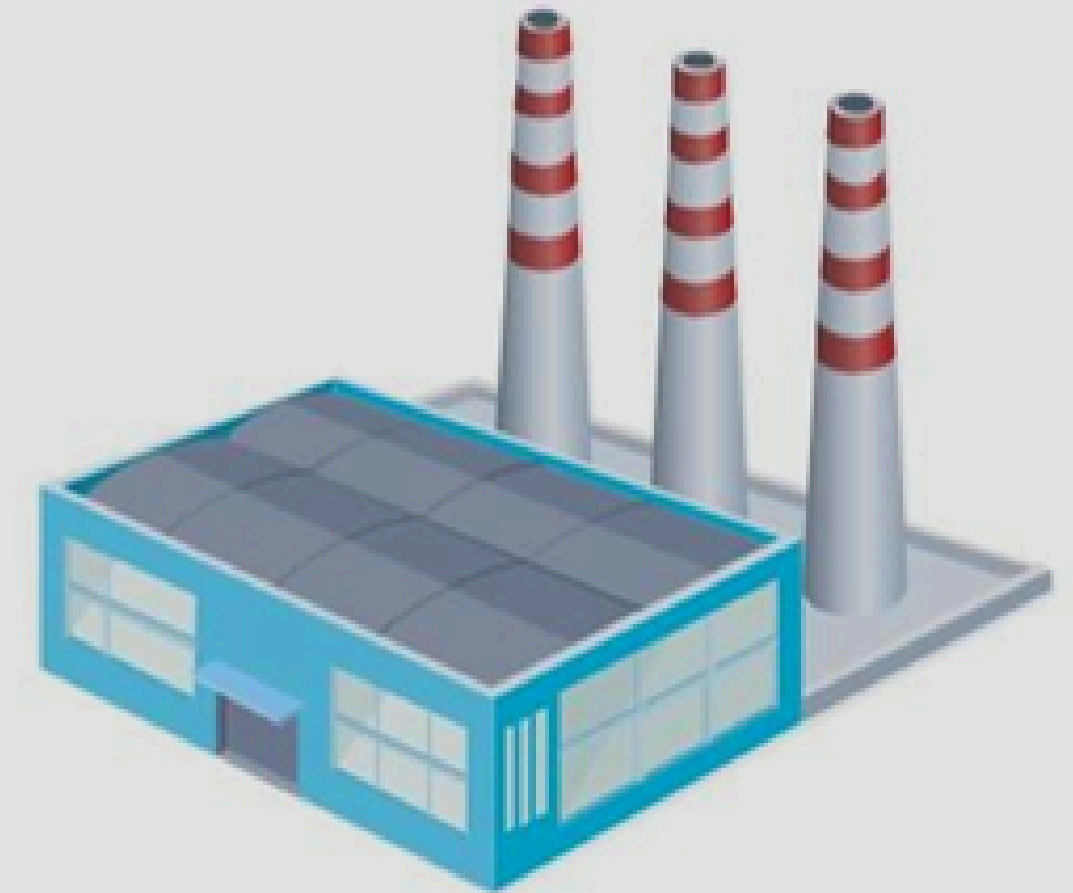


The maintenance of mechanical and water systems has health and safety implications. Professionally managed water analysis and treatment programmes, designed to protect building occupants from potential legionella or microbiological risk are therefore given a universally applied management priority. We can ensure, if required, that the modern building manager continues to comply with developing regulations at all times.



# Mechanical Maintenance

- Air Conditioning Systems , VRF,CHILLER , SPLIT ,
- Boiler Maintenance ,Calorifiers
- Pumps , steam turbine , micro turbine
- Water Treatment
- Hotel laundry , washing machine
- Solar energy system , electrical and heating
- plumbing and water system
- firefighting pumps and system
- irrigation system



# Soft Facility Management Services

## Hard facilities management services



Lighting



HVAC systems



Water systems



Fire safety



Cleaning



Waste management



Security

## Soft facilities management services





# Maintenance Reporting Service

Maintenance history reporting is carried out through **NILE FM** Notification Service. Reports cover the status of ongoing or completed maintenance activity in real-time by email or by fax if required.

**CLINICAL ENGINEERING PERFORMANCE TEST RESULTS**

DATE	TECH		

**ULTRASOUND OUTPUT**

NO. \_\_\_\_\_ DATE \_\_\_\_\_

TESTED BY \_\_\_\_\_

ULTRASOUND OUTPUT (WATTS)	ACTUAL OUTPUT (WATTS)

**DEFIBRILLATOR CALIBRATION**

INDICATED	DELIVERED
WS	WS
WS	WS
WS	WS
WS	WS
WS	WS
MAX.	

DATE \_\_\_\_\_

NEXT INSPECTION \_\_\_\_\_

# HELP DESK

Electrical and security systems are subject to ever-increasing design complexity and regulation.

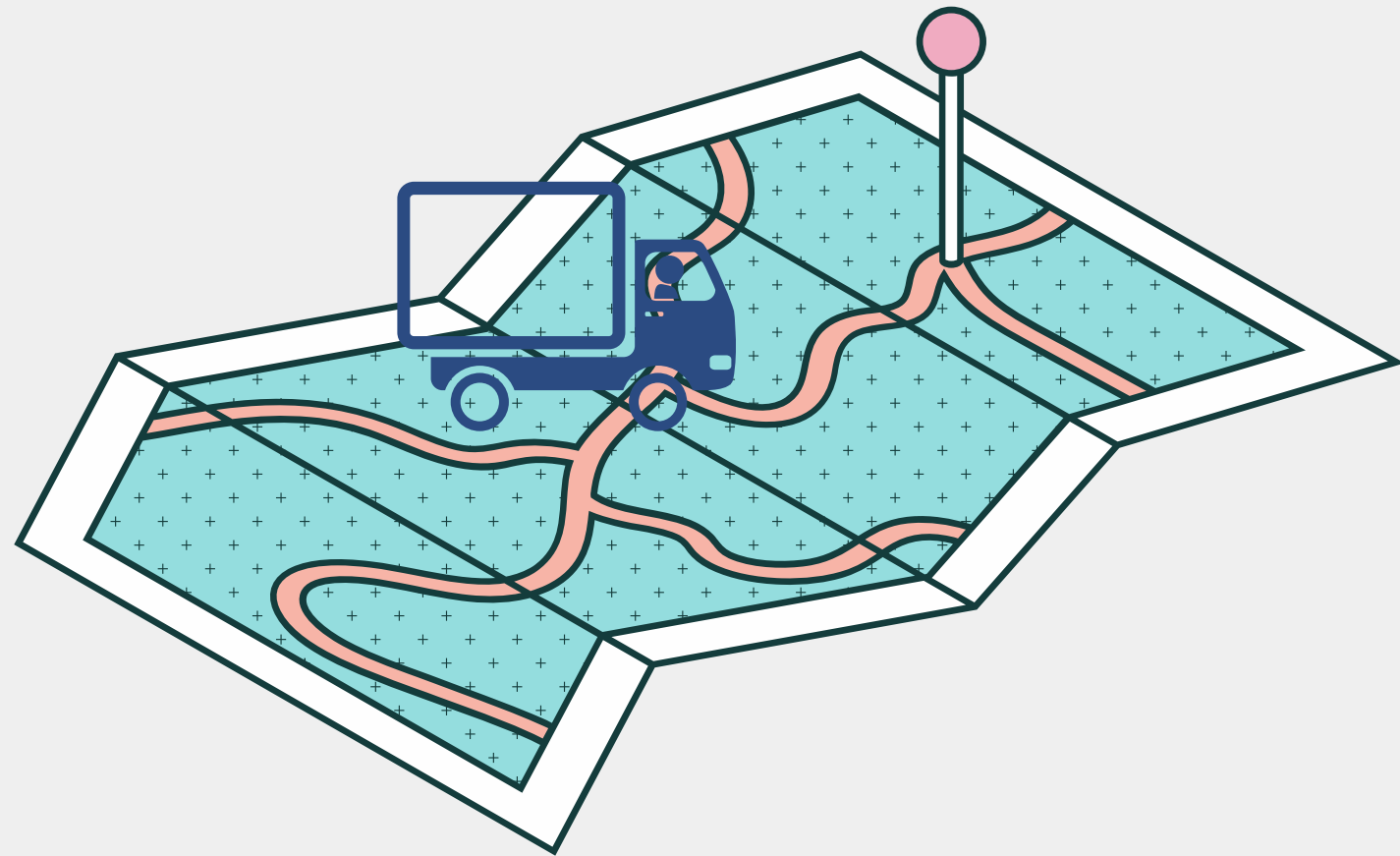
At **NILE FM** Maintenance we believe in investing in on-going training programmers to ensure on-site engineers continuously gain experience and technical capacity.

## فائمة الفحص اليومي لغلايات الماء

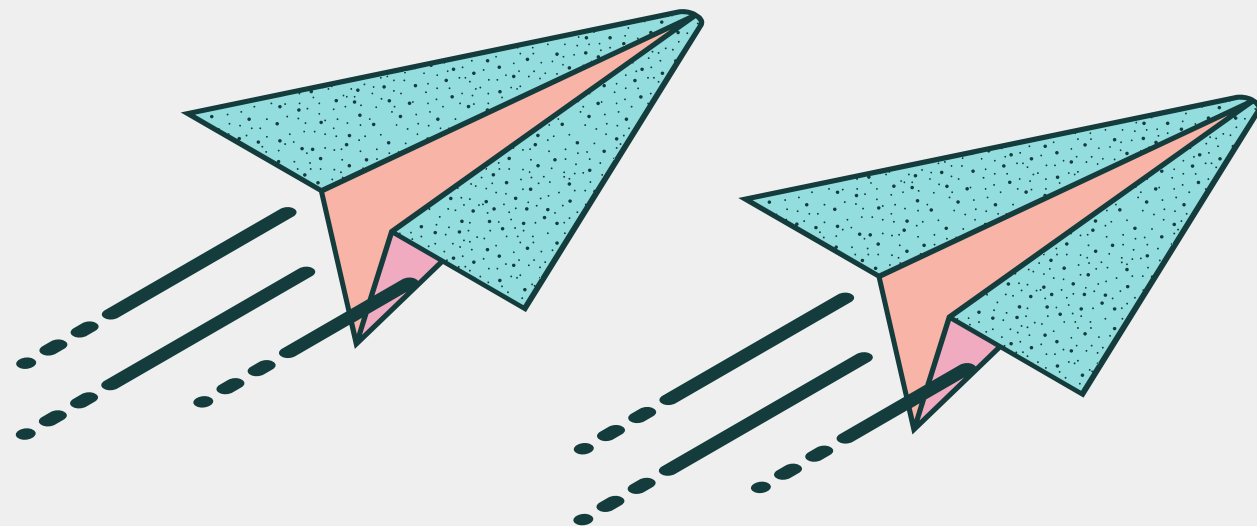
- تأكد من مستوي الوقود في خزان الوقود اليومي
- مستوي الوقود الحالي " عالي "  متو
- فرغ الهواء من صمام تفريغ الهواء اعلي البويلر وتفريغ الفم
- افتح صمام الأمان (Safety Valve).
- تأكد من نقاوة الوقود ونظافة الفلتر وعدم وجود فقاعات
- خلو جميع الوصلات من التسريب.



# Call Out Service



Working to pre-agreed response times, dedicated technicians are dispatched to restore critical mechanical and electrical systems to normal operation





# Comprehensive Maintenance Package

Maintenance services in accordance with Service Level Agreement and Planned Preventative Maintenance program. Real-time information on maintenance work is provided and preferential response times for emergency call-outs.



# Standard Maintenance Package

Providing A Good Quality Preventative Maintenance Solution, This Single And Transparent Contract Ensures That Your Specified Equipment/ Installations Are Maintained. Works Over And Above The Contract Are Billed Separately.

Under This Package Clients Have Access

To Our Call-Out Service, Service Repairs Andmany Other Services



# Company Experience

Over 15 years experience providing contracting services in Egypt and providing full maintenance service including 24 hour on-call and minor/mid size

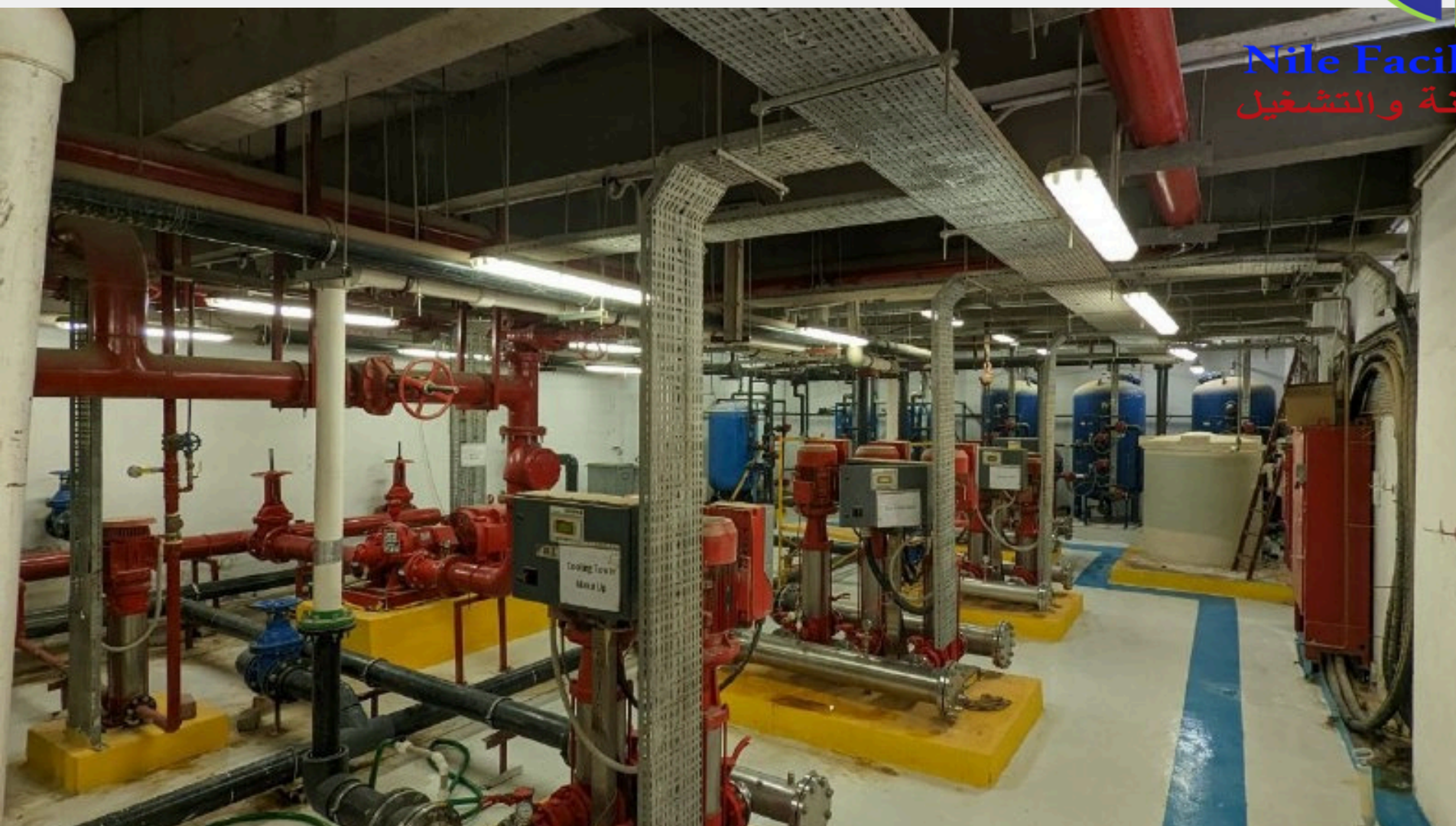
,refurbishments/builds. Also we have worked within the Health Services



**Nile Facility Management**  
النيل لخدمات الصيانة والتشغيل



Nile Facility Management  
النيل لخدمات الصيانة والتشغيل

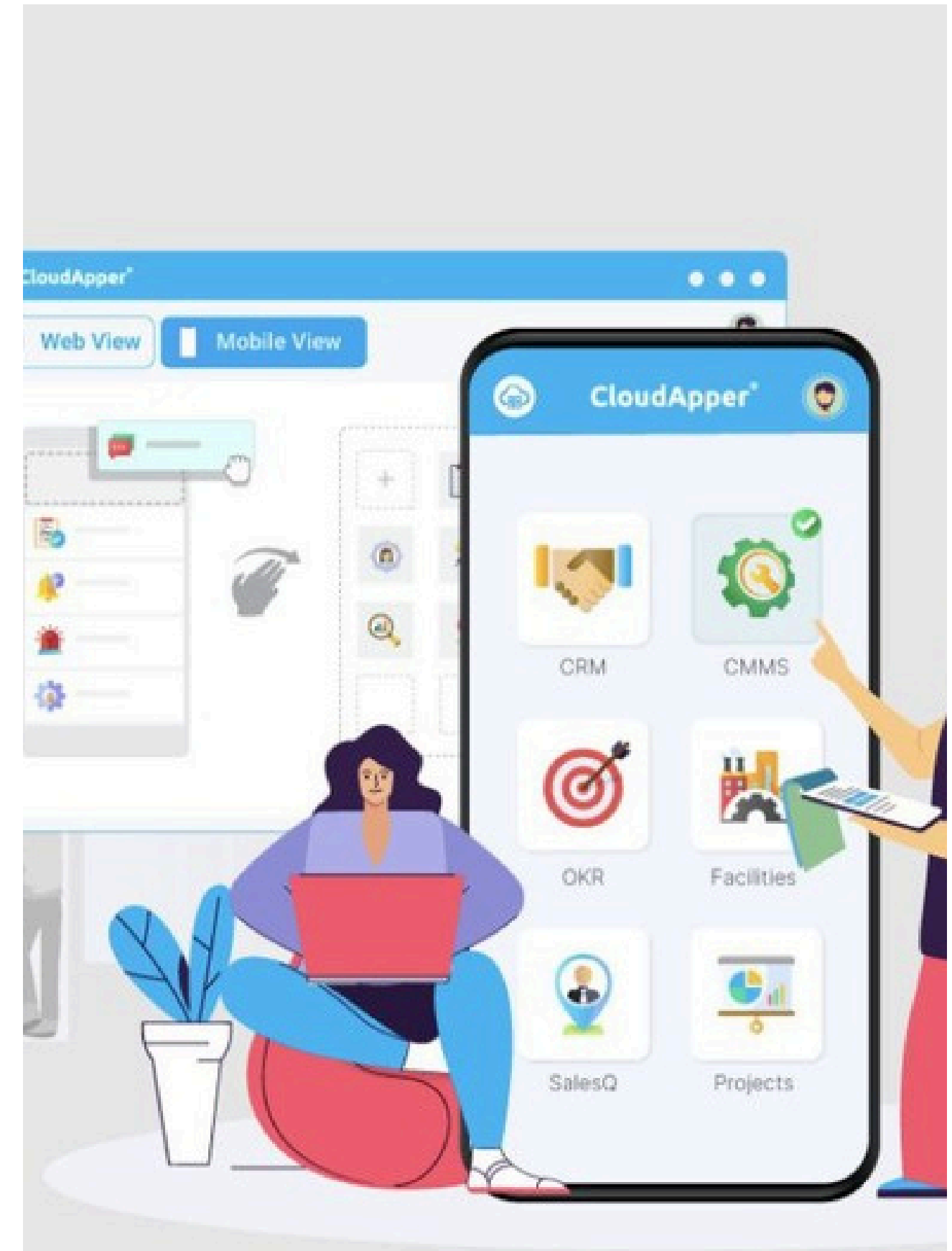






# Web & Mobile App

**BY Our Software  
we can Handle all Facility  
Management tasks directly  
from the mobile app. Managers  
can access dashboards and  
reports through the  
corresponding web application.**





[clideo.com](http://clideo.com)



# Facility management software by CloudApper®



Nile Facility Management  
النيل لخدمات الصيانة والتشغيل



CloudApper Facilities is a web and mobile application designed to simplify Nile FM facility operations and maintenance management. Our robust yet easy-to-use software help NILE FM employees save time by providing instant access to facility maintenance data and emergency procedures.

# CloudApper Facilities



## Key features:

---



Get real-time data



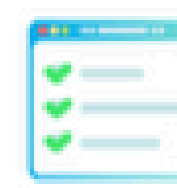
Emergency management



Maintenance management



Facility monitoring



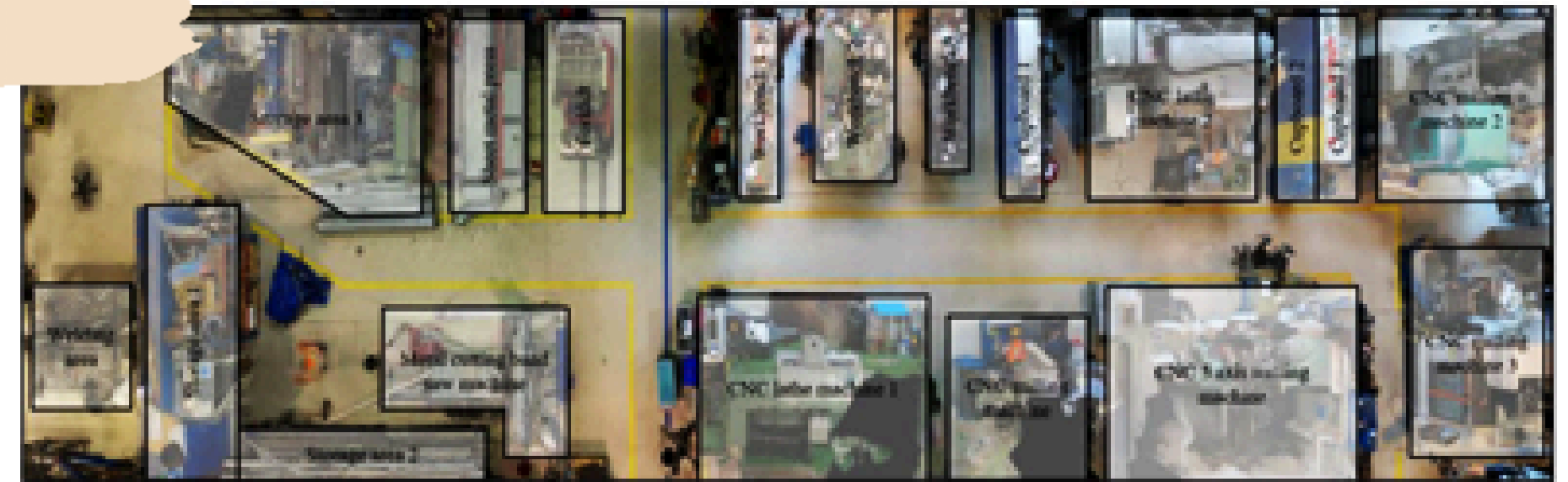
Automatic scheduling



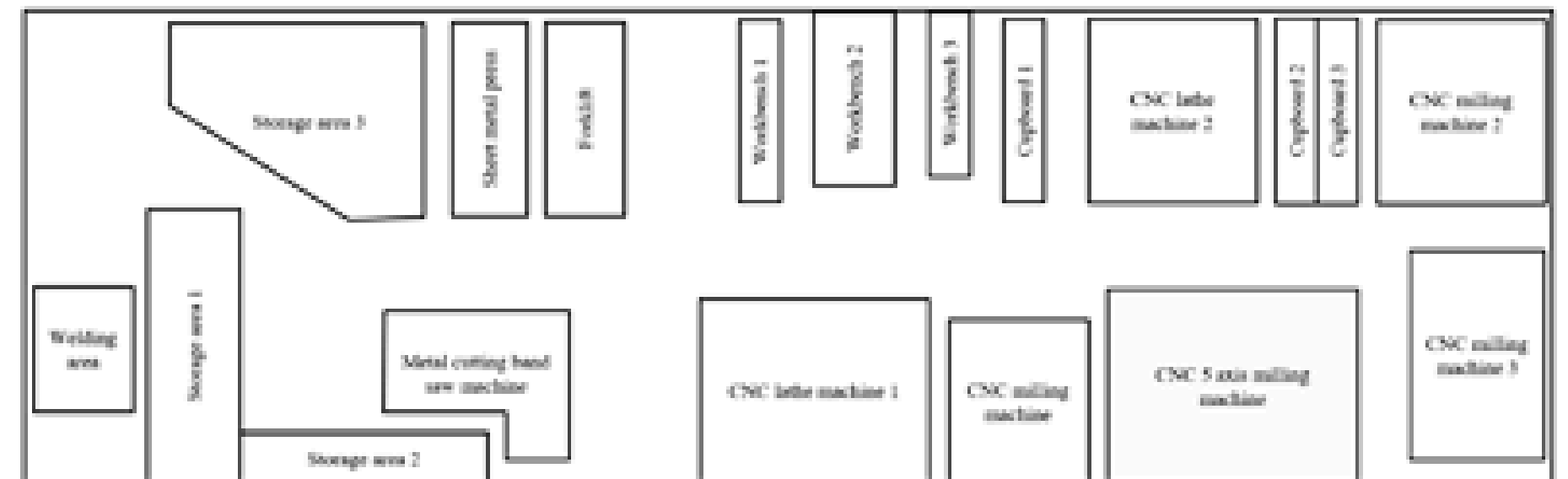
Layout map

# Layout map

The layout map function enables Nile FM team to get an quick overview of assets located within the facility. NILE FM team can now conveniently track and locate their assets using the digital floor plan.



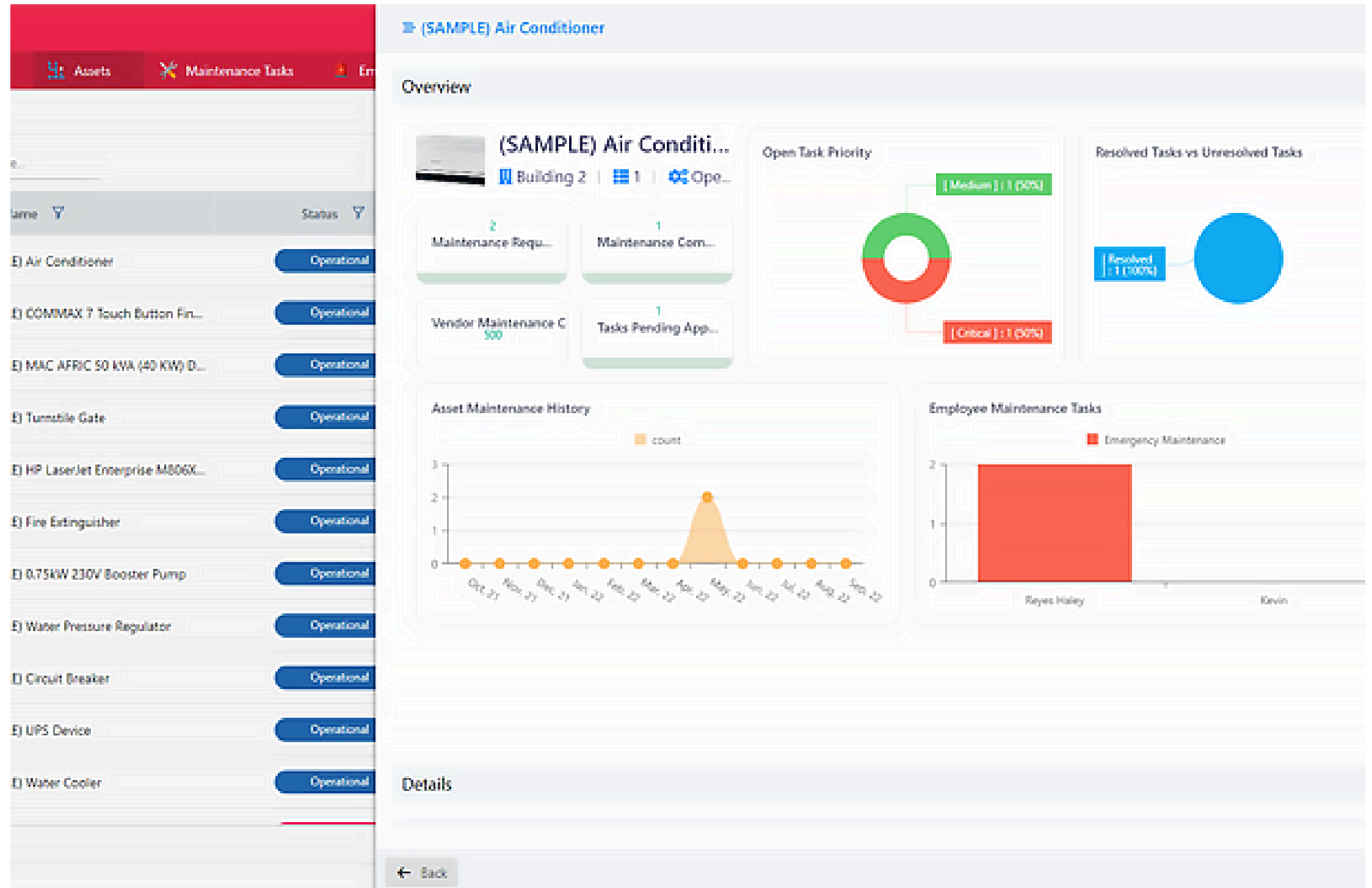
(a)



(b)

# Asset database

Keep a comprehensive database of asset information such as name, type, location, floor, photo, description, manufacturer information, specifications, warranty status, maintenance tasks, and much more.



# Facility monitoring

Monitor all operations that are being conducted across all your facilities at any given time. Easily record incidents, asset usage, maintenance, and/or replacement of vital equipment.



# Maintenance Management

Reduce the levels of equipment maintenance chaos through efficient work order management by enabling **NILE FM** staff to easily access operational instructions, task checklists, and important files from their mobile devices.



# CONTACT US

## QUESTIONS?

[info@nileps.com](mailto:info@nileps.com)

0784000310

0784000309

07703839777



**Nile Facility Management**

**النيل لخدمات الصيانة والتشغيل**